



AUSTRALIAN PRIMARY SCHOOLS
MENTAL HEALTH INITIATIVE

Overview of the KidsMatter Primary Initiative: Framework, Components and implementation details



Australian Government
Department of Health and Ageing



KidsMatter Primary has been developed in collaboration with the Australian Government Department of Health and Ageing, *beyondblue: the national depression initiative*, the Australian Psychological Society and Principals Australia, and supported by the Australian Rotary Health.

© Commonwealth of Australia 2009. Australian schools are permitted to copy material freely for communication with teachers, students, parents and carers and community members. While every care has been taken in preparing this material, the Commonwealth does not accept liability for any injury or loss or damage arising from the use of, or reliance upon, the content of this publication.

This overview has been prepared to provide information on KidsMatter Primary to schools, educators, policy makers, mental health personnel, parents and others who are interested to know more about this national mental health initiative for Australian primary schools.

Please refer to the contacts listed on page 16 for any further information.

Contents

What is KidsMatter Primary?	2
Why KidsMatter Primary has been developed	2
The KidsMatter Primary framework	4
Comprehensive model involving the whole school community	4
Addressing risk factors and increasing protective factors	5
The four components of KidsMatter Primary	6
Component 1: A positive school community	6
Why a positive school community is important	6
KidsMatter Primary target areas	6
Component 2: Social and emotional learning for students	7
Why social and emotional learning is important	7
KidsMatter Primary target areas	7
Component 3: Parenting support and education	8
Why providing parenting support and education is important	8
KidsMatter Primary target areas	8
Component 4: Early intervention for students experiencing mental health difficulties	8
Why early intervention for students experiencing mental health difficulties is important	8
KidsMatter Primary target areas	9
How KidsMatter Primary is implemented in schools	10
The role of the KidsMatter Primary Action Team in each school	10
KidsMatter Primary Implementation Support Personnel	10
Implementation model: the 7-step process	10
Implementation process	11
KidsMatter Primary supporting resources	11
KidsMatter Primary Implementation Manual	11
KidsMatter Primary Programs Guide	11
State and Territory-based KidsMatter Primary Project Officers	11
Supporting resources for parents and teachers	12
Pilot phase and evaluation of KidsMatter Primary	12
KidsMatter Primary pilot schools	12
Glossary	14
References	16
KidsMatter Primary contacts:	16
A note on the KidsMatter Primary development partners	17
Appendix 1	18

What is KidsMatter Primary?

KidsMatter Primary is the first national mental health promotion, prevention and early intervention initiative specifically developed for primary schools. It involves the people who have a significant influence on children's lives – parents, families, care-givers, teachers and community groups – in making a positive difference for children's mental health during this important developmental period.

The KidsMatter Primary initiative aims to:

- a) improve the mental health and well-being of primary school students
- b) reduce mental health problems amongst students
- c) achieve greater support for students experiencing mental health problems.

To achieve these aims, KidsMatter Primary promotes collaborative involvement across the health and education sectors. It provides a framework for mental health promotion, prevention and early intervention (PPEI) that is specifically oriented to primary schools, rather than presenting schools with a single defined program.

The KidsMatter Primary Framework is based on a risk and protective factors model and focuses on four areas where schools can make a difference to student mental health. These four areas are:

1. A positive school community
2. Social and emotional learning for students
3. Parenting support and education
4. Early intervention for students experiencing mental health difficulties.

Using the KidsMatter Primary framework as a guide, schools are provided with implementation support and key resources to put in place a coordinated set of strategies to address the specific mental health and well-being needs of their students. Because of its flexibility KidsMatter Primary is able to build on the work schools are already doing to address student mental health and well-being through National, State, Territory and sector-based mental health initiatives and policies.

The KidsMatter Primary framework acknowledges the critical role schools can play to enhance factors that promote children's resilience, such as a sense of belonging and connection. It emphasises a sense of shared community responsibility for children's wellbeing and promotes

partnerships with parents and a range of community services/agencies to improve children's mental health and family relationships. It recognises that teachers can and do make significant difference in the lives of children and seeks to enhance the capacity of schools to recognise mental health risks in children and respond effectively.

Why KidsMatter Primary has been developed

The need for a children's mental health initiative

Concern for action to address children's mental health issues has been growing in Australia (and internationally) in response to population trends that indicate troubling rates of susceptibility to mental health problems. Findings from the National Survey of Mental Health and Well-Being suggest that 14% of Australian primary school children experience mental health difficulties (Sawyer et al., 2000).

Given these figures and a low level of access to mental health treatments and interventions, there is a need for population based models for addressing mental health. Australia's National Mental Health Plan (2003 – 2008) promotes a population health framework that seeks to address a range of psychosocial and environmental determinants of mental health (Australian Health Ministers, 2003). It emphasises the need for cross-sectoral linkages that can build local capacity for mental health promotion, prevention and early intervention to address particular local needs and circumstances.

Mental health and schools

School is the most significant developmental context, after family, for primary-aged children. Since almost all children attend school, schools are ideally placed to promote children's mental health. Schools are also well positioned to provide parenting resources to families who may be seeking support for mental health or general child development issues. Research indicates that, after GPs, teachers are the professionals most likely to be asked for advice on children's emotional or behavioural problems (Sanders et al., 1999).

Schools themselves have also become increasingly concerned about a range of behavioural problems relating to mental health issues, including aggressive behaviour and bullying, for which specialist interventions and additional professional support may be required. While teachers cannot and should not be expected to take on the role of mental health professionals, providing schools with clear, relevant and comprehensive resources for promotion, prevention

and early intervention for children's mental health will help teachers more effectively meet the needs of the children in their care and minimise behaviour problems. Addressing children's mental health needs helps teachers get on with teaching and children get on with learning.

A range of mental health and mental health-related initiatives have already been implemented in Australian schools. These include programs for promoting wellbeing and resilience through social and emotional learning as well as a number of issue-specific programs, for example, suicide prevention, early intervention for depression, anti-bullying, promotion of cultural diversity, safe schools, etc. While positive effects have been shown for a number of such programs there is a need for a comprehensive initiative that considers the range of risk factors and mental health issues for children and provides a framework that will enable schools to assess the particular needs of their students and select the most appropriate programs to address them.

Crucial for any initiative to promote children's mental health at primary level is the need to involve families. This entails informing and involving parents and carers in school-based mental health initiatives, and, most importantly, enabling families to access relevant information and support services for enhancing parenting and carer skills.

Mental health and learning

Good mental health is integral to academic learning (Collaborative for Academic, Social and Emotional Learning [CASEL], 2003; World Health Organization [WHO], 2006). Mentally healthy students arrive at school 'ready' to learn and are more likely to achieve academic success. They are more motivated learners, have fewer behavioural problems and show greater commitment to their schoolwork. They are also more likely to experience success after primary school, with a greater likelihood of graduating and better prospects for constructive employment (CASEL, 2003; Flaspohler et al., 2005).

Conversely, poor mental health reduces students' ability to learn. Children with emotional disturbance have the highest rates of school failure (Flaspohler et al., 2005). Academic failure has lasting consequences, as the failure to learn in school limits a person's chances to succeed in the future.

Schools are more likely to achieve goals related to learning and academic success when students' mental health is prioritised and addressed with the same enthusiasm as numeracy or literacy (CASEL, 2003). Schools that promote mental health are also more likely to reach more underserved students, make fewer special education referrals and achieve higher levels of staff satisfaction (Paternite & Johnston, 2005).

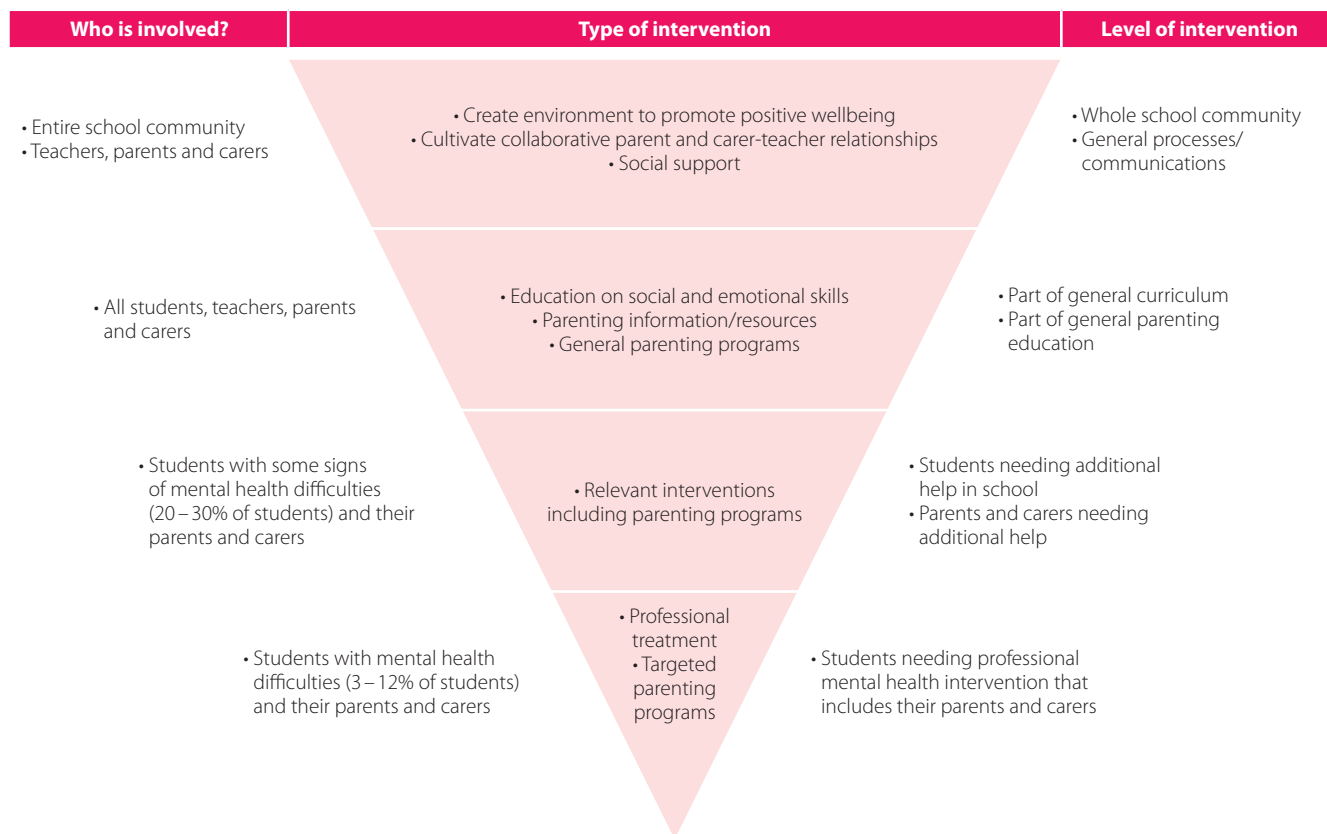
The KidsMatter Primary Framework

Comprehensive model involving the whole school community

The WHO's (1994) health promoting schools framework is premised on the assumption that schools working together with families and communities are crucial not only to reaching students, but to establishing the protective bases needed for prevention and early intervention in mental health, and to developing networks of social capital needed to help communities respond effectively to the needs of children and youth. Health promoting schools actively promote positive and nurturing school relationships, provide explicit curricula for students to develop social and personal skills, and engage in partnership with parents, families and communities to more effectively cater to children's wellbeing needs.

The WHO health promoting schools framework indicates that a whole school model for promotion, prevention and early intervention relating to children's mental health and wellbeing needs to target different levels of support and intervention for the whole school community and to particular groups. While parents and families are implicitly included in the WHO model as part of the whole school community, the primary school emphasis of KidsMatter Primary also specifically recognises the key influence of parents and families on children's mental health at this important developmental stage. KidsMatter Primary's whole school approach includes the involvement of parents and carers at each of the four levels of intervention outlined in the WHO framework, as indicated in the following model.

KidsMatter Primary whole school model for mental health promotion, prevention and early intervention in primary schools



(table adapted from World Health Organization, 1994)

Addressing risk factors and increasing protective factors

Research into prevention of mental health difficulties has identified a range of risk factors that are likely to increase the chances of children experiencing poor mental health. A number of protective factors, characteristics or conditions that can improve children's resistance to risk factors, have also been identified. Protective factors act to strengthen children's mental health and wellbeing, making it less likely they will develop mental health problems. KidsMatter Primary focuses on some key areas that research has shown can increase protective factors and really make a difference to children's mental health.

Risk and protective factors may be identified in relation to individual skills, needs and temperament, familial

circumstances and relationships, school context, specific life events and social environment, as indicated in the following table. It should be noted that the presence of risk factors does not mean a given child will experience mental health difficulties. However, when multiple risk factors are present this likelihood is significantly increased.

In addition to impacting directly on children's overall wellbeing, risk and protective factors influence academic performance. Teaching children skills for social and emotional competence not only improves their wellbeing; it has also been found to improve motivation and school performance (Bernard, 2004). These positive impacts apply to both general school populations and to specific target groups (McGrath, 2005).

Risk and protective factors for children's mental health

	Protective factors	Risk factors
Individual Children's abilities and needs	<ul style="list-style-type: none"> • Good social and emotional skills • Positive coping style • Optimism • Easy temperament • School achievement 	<ul style="list-style-type: none"> • Poor social and emotional skills • Impulsivity • Pessimistic thinking style • Difficult temperament • Low IQ • Low self esteem • Disability
Family Circumstances and relationships	<ul style="list-style-type: none"> • Family harmony and stability • Supportive and caring parents and carers • Strong family norms and values • Responsibility (of child) within the family 	<ul style="list-style-type: none"> • Family disharmony, instability or breakup • Harsh or inconsistent discipline style • Low parental involvement • Family substance abuse • Family mental illness • Disability of parent or sibling
School Practices and environment	<ul style="list-style-type: none"> • Positive school climate that enhances belonging and connectedness • School norms against bullying and violence • Opportunities for success and recognition of achievement 	<ul style="list-style-type: none"> • Negative school climate that does not effectively address issues of safety, bullying or harassment • Peer rejection • School failure • Poor attachment to school • Inadequate or harsh discipline policies and practices
Life events/situations Opportunities and stressors	<ul style="list-style-type: none"> • Opportunities available at critical points • Involvement with significant other/s 	<ul style="list-style-type: none"> • Physical, sexual or emotional abuse • Difficult school transition • Death of family member • Emotional trauma
Social Access, inclusion and social cohesion	<ul style="list-style-type: none"> • Participation in community networks • Access to support services • Economic security • Strong cultural identity and pride • Cultural norms against violence 	<ul style="list-style-type: none"> • Discrimination • Isolation • Lack of access to support services • Socioeconomic disadvantage • Neighbourhood violence and crime

(table adapted from Commonwealth Dept of Health and Aged Care, 2000 & Spence, 1996)

KidsMatter Primary uses a risk and protective framework and focuses on four areas where schools can strengthen the protective factors for students' mental health and minimise the risk factors. Schools, through their ongoing contact with children and families, are well placed to address several of the risk and protective factors outlined above.

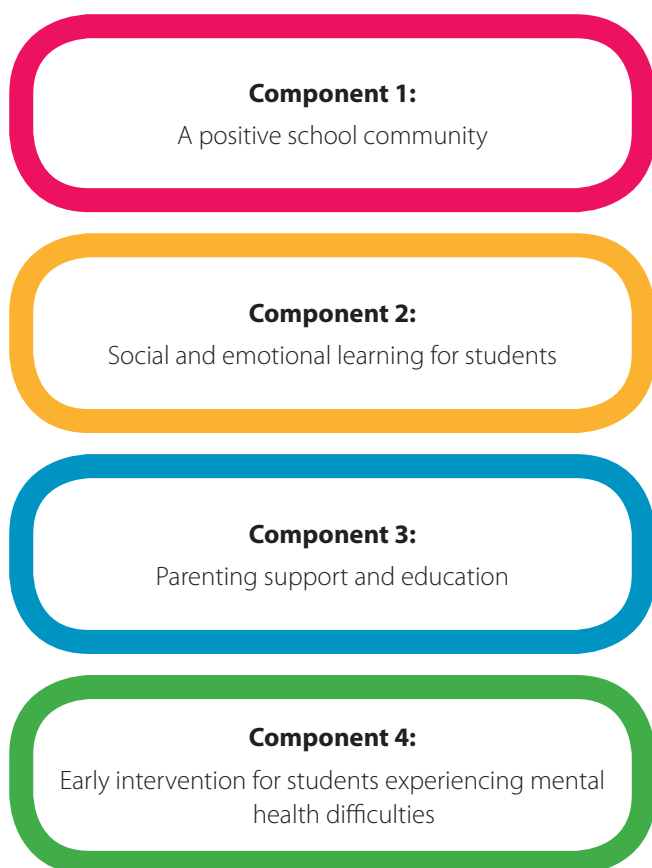
Firstly, schools can provide a positive school climate where the sense of belonging and connection can help to protect students from developing mental health difficulties. Schools can also teach students social and emotional skills

to strengthen their mental health. Schools also provide an access point for families, and are in a position to provide parents and carers with information and resources on parenting to positively affect their children's mental health. Lastly, due to their close contact with students, teachers are ideally placed to identify any of their students showing early signs of mental health difficulties, and to assist them and their families to get the help they need.

The four components of KidsMatter Primary

These four areas where schools can help to strengthen their students' mental health make up the core content of KidsMatter Primary. Dividing KidsMatter Primary into the four components is a way of making the task of improving students' mental health in schools more manageable. It also ensures that the efforts that schools put into this initiative are being focused most effectively across all the contributing/necessary contexts in children's lives and involving all the significant people impacting on children's mental health.

The four components of KidsMatter Primary are:



Component 1: A positive school community

Why a positive school community is important

A positive school community promotes feelings of belonging and connection for children, which are protective factors for mental health. A positive school community is also essential for school staff to ensure that the environment supports and promotes their wellbeing. When staff feel supported and connected they are more able to effectively provide for their students' academic, social and emotional needs. A positive school community that is welcoming and respects diversity will encourage parents, families and the community to participate and contribute to school life.

KidsMatter Primary target areas

Three target areas have been identified for this component, with objectives for each target area that will encourage schools to provide a positive school community.

Target areas	KidsMatter objectives
1. Sense of belonging and inclusion within the school community	<p>a. Caring and supportive relationships are encouraged within the school community:</p> <ul style="list-style-type: none"> • between staff • between staff and students • between staff and parents/families <p>b. School communications and activities are inclusive and accessible to all students and families</p> <p>c. School addresses inclusion and belonging at a whole school level through specific policies and practices</p>
2. Welcoming and friendly school environment	<p>a. School staff are welcoming to families</p> <p>b. School environment (displays, artwork, facilities, etc) reflects the varied cultures, family-types and needs of families at the school</p>
3. Collaborative involvement of students, staff, families and the community in the school	<p>a. Students, staff, families and the community are provided with opportunities to become involved in a range of school activities</p> <p>b. Students, staff, families and the community are encouraged to share their views and contribute to school decisions</p>

Research indicates that children's sense of belonging at school is a key protective factor that promotes wellbeing as well as academic achievement. Students who have a sense of belonging and connectedness to the school have been found to feel happier, safer, and to cope better with the ups and downs of life than students whose school connectedness is low (Commonwealth Department of Health and Aged Care, 2000; Stewart, Sun, Patterson, Lemerle, & Hardie, 2004; WHO, 2006). Students who do not feel connected to school are more likely to experience low self concept, poor mental health, be in conflict with parents and teachers, and seek out alternative forms of social connectedness by belonging to negative peer groups (Spence et al., 2005).

Supportive relationships that respect and value diversity are important for promoting a sense of inclusion. Ensuring that policies and practices are inclusive and that school communications and activities are accessible to all members of the school community can enhance protective factors for positive mental health.

Making school environments family-friendly can help to overcome anxieties and signal to families that the school is a place for them as well as for their children, where support for a range of issues concerning their children can be found.

A positive sense of community is enhanced when all community members are encouraged to feel 'ownership' towards the school through opportunities to become involved in school activities, share their views and influence school decisions.

Component 2: Social and emotional learning for students

Why social and emotional learning is important

Social and emotional learning (SEL) involves developing the ability to recognise and manage emotions, promoting caring and concern for others, making responsible decisions, establishing positive relationships, and handling challenging situations effectively. Research has shown that SEL is fundamental to children's mental health, academic learning, moral development, and motivation to cooperate and achieve. Students who have social and emotional competencies and skills find it easier to manage themselves, relate to others, resolve conflict, and feel positive about themselves and the world around them.

KidsMatter Primary target areas

Two target areas have been identified for this component, with objectives for each target area that will assist schools to provide effective social and emotional learning for students.

Target areas	KidsMatter objectives
1. Effective social and emotional learning curriculum taught to all students	<p>a. Curriculum is taught that:</p> <ul style="list-style-type: none"> covers the five core social and emotional competencies has research evidence of effectiveness (or at least an identified theoretical framework) <p>b. Curriculum is taught:</p> <ul style="list-style-type: none"> formally (structured sessions that adhere to the program manual) regularly in a coordinated and supported way throughout the school <p>c. Teachers have the knowledge, skills and commitment to effectively deliver SEL curriculum</p>
2. Opportunities for students to practise and generalise SEL skills	<p>a. Opportunities are regularly provided for students to generalise their SEL skills in the classroom, school and wider community</p>

Research conducted by the CASEL (2003) has identified five core social and emotional competencies that should be addressed in any broad reaching social and emotional curriculum. These are:

- Self-awareness
- Social awareness
- Self-management
- Relationship skills
- Responsible decision making

SEL competencies need to be taught in schools as an integrated part of the regular curriculum. Teaching of SEL needs to be coordinated and supported throughout the school across all year levels. It is important to provide children with developmentally appropriate opportunities to keep building their learning of key SEL competencies over the duration of primary schooling. Opportunities for students to practise and generalise SEL skills in the classroom, school and wider community are also crucial to implementing effective SEL.

Research into introducing SEL curriculum to schools has identified a number of barriers associated with teacher attitudes, confidence and skills that need to be addressed in order to successfully implement an SEL program. This highlights the importance of effective, ongoing professional development to support the delivery of SEL programs in schools.

A number of programs for teaching SEL competencies have been developed in Australia and internationally. KidsMatter Primary has comprehensively reviewed a range of them and compiled a resource guide (KidsMatter Primary Programs Guide: www.kidsmatter.edu.au/programs-guide/) that includes information on the competencies targeted, the evidence base for the effectiveness of the program, the mode of delivery and the availability of specific professional development to support school implementation. Using this guide schools will be able to select the program that best suits their needs for coordinated implementation across the curriculum.

Component 3: Parenting support and education

Why providing parenting support and education is important

The family is central to children’s mental health (Tolan & Dodge, 2005). Researchers have identified a range of family-related risk and protective factors that influence children’s mental health (Commonwealth Department of Health and Aged Care, 2000). By providing parenting support and education, schools can make a substantial difference to the mental health of children.

Schools, through their regular contact with families, provide an ideal access point for families to learn about parenting, child development and children’s mental health. Teachers are professionals with high community visibility, respect and trust, which means they are likely to be consulted by parents who are experiencing difficulties with child rearing (Sanders et al., 1999). By linking parents with appropriate information and education, schools can greatly assist parents in their child rearing and parenting skills, which will in turn enhance the mental health of their children.

Parenting support and education is crucial to the success of school-based mental health programs for students. Schools that implement SEL or behaviour management programs without providing parenting support and education are less likely to achieve goals related to students’ mental health. A collaborative approach, where parents and schools work together to promote SEL, is more likely to yield substantial and sustained improvements for children (Elias, 2003; Sanders et al., 1999; Fuller, 2001; Stormshak et al., 2005). Parents also need to receive information on how to identify mental health difficulties in their children and understand how the school can support students with mental health issues and help them get the most appropriate assistance.

KidsMatter Primary target areas

Three target areas have been identified for this component, with objectives for each target area that will assist schools to provide effective parenting support and education.

Target areas	KidsMatter objectives
1. Effective parent-teacher relationships	a. Teachers have the skills, confidence and commitment to form collaborative working relationships with parents
2. Provision of parenting information and education	a. Effective information is provided to parents on parenting practices, child development and children’s mental health b. Parents are supported to access parenting education programs
3. Opportunities for families to develop support networks	a. Opportunities are provided for parents to get together in a supportive environment b. Community resources to support parents and carers are identified and promoted

Parents/families will be much more likely to access available support and education if they have developed collaborative relationships with the school. The nature of these relationships is impacted on by the parents/families themselves and their attitudes to and experiences of school – both currently and during their own education. Forming collaborative relationships with parents/families can be challenging. The needs of staff, particularly their skills and confidence in relating to parents on these issues may need to be considered. It is important that individual staff do not feel that it is their own responsibility to provide parenting information or education to parents/families – the approach taken needs to be coordinated and supported throughout the school.

Parenting information and education covers a broad spectrum from incidental or general information through to formal parenting programs. Some schools provide specific information and programs on parenting such as tips in the school newsletter, access to parenting books and videos, and web-based information. Parenting information on child development and on risk and protective factors for mental health can also be provided as part of transition programs or parent information sessions.

Community groups and agencies that specialise in parenting education can also be invited to provide information sessions and specific programs at the school.

School staff can increase levels of support available to parents by linking them with relevant services and organisations in the community. Schools can also provide opportunities for parents to develop relationships and support each other – reducing social isolation is a protective factor for children’s mental health.

Component 4: Early intervention for students experiencing mental health difficulties

Why early intervention for students experiencing mental health difficulties is important

Early intervention can make a significant difference to reducing mental health difficulties in children and can result in dramatic, practical benefits that are sustained over time (Durlak, 1998). Effective support during the early stages of a child’s difficulty can mean that mental health issues are resolved before they become worse or entrenched, improving the quality of life for children and their families.

While there is much evidence to support the effectiveness of early intervention, the problem is that very few children with mental health difficulties receive any professional support. Only one quarter to one third of children with a mental health problem are likely to attend professional services (Sawyer et al., 2001). This means that the chances of receiving effective help are quite low, even for children who are identified, resulting in many children going on to develop serious mental health difficulties.

Schools are in an effective position to identify and assist students who have early signs of mental health difficulties, due to the significant amount of contact that they have with students and their families. This is particularly so in primary schools where teacher interaction with students and their families is extensive and regular.

There are a range of ways in which schools assist students and families to access interventions. Some schools have very limited resources and supports while others have access to a range of supports in the community. Some schools work closely with their local community agencies and are able to offer many services and interventions at the school or in the local area. Each school will need to identify both the needs of their students and the supports available to them.

KidsMatter Primary target areas

KidsMatter Primary helps schools and teachers understand how to provide early intervention for students experiencing mental health difficulties. Three target areas have been identified for this component, with objectives for each target area that will assist schools to effectively address this component.

Target areas	KidsMatter objectives
1. Promotion of early intervention for mental health difficulties	a. School staff understand the importance of early intervention and convey this to students and families
2. Attitudes towards mental health difficulties	a. School community aims to destigmatise mental health difficulties
3. Processes for addressing the needs of students experiencing mental health difficulties	<p>a. All school staff are educated about how to identify students experiencing mental health difficulties</p> <p>b. There are processes in the school to identify and assist students who are experiencing mental health difficulties</p> <p>c. Appropriate interventions, including referral pathways, are identified and planned for students experiencing mental health difficulties</p> <p>d. Students and families are supported to access interventions</p>

Schools can support early intervention by identifying and assisting those students showing early signs of mental health difficulties (as well as those students identified as having ongoing mental health problems). Through their close relationships with students and their families teachers are often ideally placed to notice when students appear to be burdened or troubled, or when they show further early signs of difficulty, such as trouble with managing anger or anxiety, coping with change, working cooperatively and/or making and keeping friends. Teachers and schools can support those students already exhibiting significant mental health difficulties by understanding the pathways to support services including referral processes; by helping them to remain engaged with their schooling; by monitoring their functioning at school and by closely liaising with parents

and support services. Research clearly shows that early intervention is more effective when parents, teachers and support services work closely together.

It is vital that school staff realise that they can really make a difference to students' lives. By recognising that they have a key role to play and understanding the benefits of early intervention teachers can make a profoundly positive contribution to a child's mental health and their future development.

KidsMatter Primary professional development for this component will assist teachers to understand the early signs of children's mental health difficulties and the benefits of early intervention, which will in turn increase their confidence in assisting their students. Teachers are also provided with some general strategies to help students experiencing mental health difficulties to remain engaged in their schooling. Teachers also need to be clear about their specific roles and responsibilities in identifying and intervening with students experiencing mental health difficulties. This includes being clear about the limitations and boundaries of teachers' role in providing support for children with mental health difficulties. It is also being clear that the role of teachers is not to 'label' or 'diagnose' children.

There are a number of challenges for schools in identifying and assisting students who are experiencing mental health difficulties. Some teachers may perceive that it is not their role to become involved in this way with students. However, an important aspect of destigmatising mental health issues is to acknowledge when students are having difficulties and to encourage help-seeking. Teachers may feel they don't have the skills to deal with mental health issues in their students or may view students' behaviour problems as issues of discipline, rather than understanding them in the context of the students' mental health. Professional development for this component will help schools address these issues.

How KidsMatter Primary is implemented in schools

Implementing KidsMatter Primary across the whole school, involving all staff and engaging partnerships with parents and support from community organisations, requires that schools prioritise a specific focus on KidsMatter Primary and develop a sense of ownership of the initiative. Implementing KidsMatter Primary requires a planned and coordinated whole school approach driven by a strong and enthusiastic leadership team and a principal who can demonstrate and articulate commitment through active engagement in all stages of the initiative. A particular implementation model has been selected that includes consultation with staff so that their needs and concerns are central in the planning process.

The role of the KidsMatter Primary Action Team in each school

To achieve the planned and coordinated approach required for effective implementation of KidsMatter Primary, schools establish an Action Team to undertake the responsibility for coordinating and “driving” it. The Action team includes the school principal, and ideally

- a classroom teacher
- a parent representative
- a representative from the welfare/wellbeing team (e.g. the school psychologist/counsellor or student welfare coordinator) if the school has this person on site.

The school principal engages in leadership practices that help to ensure that KidsMatter Primary links with the school’s vision and policies. This also requires articulating the importance of mental health to learning and life, providing support to staff throughout the process, modeling the competencies to be taught, learned and utilised and to be a visible and vocal supporter of KidsMatter to the entire school community.

Although the role of the principal is central in creating a school community open to change and improvement, one person cannot carry out this responsibility alone. It is important for the Action Team at each school to demonstrate their commitment through active engagement in planning and coordinating the implementation of KidsMatter Primary. They also support teachers’ central role in its delivery, and to recognise the importance of engaging families. KidsMatter Primary has been designed to support all school staff with resources and skills to carry out the initiative, so that their energies are spent on things that work.

Action Teams attend a 1-day briefing session prior to commencing implementation of KidsMatter Primary, and are guided through the implementation process by Implementation Support Personnel.

KidsMatter Primary Implementation Support Personnel

With a sound understanding of the KidsMatter Primary initiative, KidsMatter Primary Implementation Support Personnel (ISP) provide ongoing support to KidsMatter Primary schools. They assist school-based Action Teams to plan and implement the four components of KidsMatter Primary using a whole school approach, as well as review progress in accordance with the goals of the school. They also help access, or facilitate access to programs and resources and where appropriate, provide all staff professional learning sessions in each of the four KidsMatter Primary components.

The role of the KidsMatter Primary ISP is crucial to enabling schools to coherently and systematically implement a whole-school approach to children’s mental health.

Implementation model: the 7-step process

To support schools to systematically integrate KidsMatter Primary and maximise benefits for children’s mental health a step-by-step implementation model has been specifically developed. The 7-step process is based on a problem-solving model that provides a range of tools to help KidsMatter Primary teams recognise and respond to the particular context of their school. It enables each school to set goals and to identify their specific needs and concerns in relation to the KidsMatter Primary objectives, develop strategies that best address these, and review progress. The 7-step process is used to develop an action plan that incorporates planning through problem-solving and a programmed review of the implementation of each component.

The seven steps are comprehensive and are designed to deal with implementation issues that may arise, including addressing any concerns or issues that teachers may have or that may be present in the school. Using the 7-step process for action planning incorporates problem-solving as well as a programmed review of the implementation of each component. The steps are:

1. Define the issues by writing a summary statement to describe the school’s current situation related to each component (using information from the KidsMatter Primary staff survey/audit described below)
2. Set goals based on each summary statement
3. Identify any concerns in achieving the goals
4. Develop a broad range of options/strategies to address concerns and achieve goals
5. Evaluate feasibility of each option/strategy
6. Formalise the component plan
7. Implement the plan and review

Implementation process

Before implementing KidsMatter Primary it is important for schools to conduct an audit of what they are already doing to address mental health and wellbeing. A comprehensive KidsMatter Primary Staff Survey has been developed for use by Action Teams as part of initiating KidsMatter Primary in schools. The survey gathers information on what teachers are currently doing to promote students' mental health and asks their views on the school's current activities in relation to the areas covered by the four components of KidsMatter Primary. This information is then collated into a comprehensive School Mental Health Map which then forms the basis for identifying the areas under each KidsMatter Primary component where attention should be prioritised.

Following completion of the Mental Health Map, Action Teams work with their implementation support person to develop and apply a tailored action plan for each KidsMatter Primary component. The KidsMatter Primary Implementation Manual outlines how schools can apply the 7-step process for implementing each of the KidsMatter Primary components.

KidsMatter Primary supporting resources

KidsMatter Primary Implementation Manual

A detailed and comprehensive manual is provided to each school to guide implementation of the KidsMatter Primary initiative. The manual outlines the initiative, providing a rationale for each component and a structured implementation process. Key information on the KidsMatter Primary framework is coupled with step-by-step guidelines for working through the 7-step model to enable schools to systematically address each of the four components.

The manual includes specific tools for Action Teams to use as part of the implementation process. These include:

- strategies for informing the school community about the initiative
- staff survey materials for each of the four components – these enable all staff to have input into identifying areas of both strengths and concerns in relation to each of the KidsMatter Primary components
- a mental health mapping tool – this is used for collating survey results and helps Action Teams to prioritise the areas requiring development for their schools
- comprehensive planning documents for each KidsMatter Primary component.

KidsMatter Primary Programs Guide

The KidsMatter Primary Programs Guide is a resource to complement the KidsMatter Primary Implementation manual. It has been designed to assist schools to make informed choices when selecting school mental health programs. There is a diverse range of mental health programs available for use in Australian schools and it can be difficult and confusing for schools to know which programs to choose.

The KidsMatter Primary Programs Guide provides summarised information on school-based mental health programs that can be used to address each KidsMatter Primary component. This Guide is intended to help schools make decisions about which programs are most suitable for their needs and for their students. In compiling the Guide an extensive list of available school programs were identified, reviewed and categorised according to explicit and relevant criteria. The Guide also includes a detailed overview of each program so that schools can compare and select programs to suit their particular needs. It is important to note that inclusion of a program in this Guide does not constitute an endorsement by KidsMatter Primary.

The KidsMatter Primary Programs Guide was developed by the Australian Psychological Society in consultation with a reference group comprising experts in children's mental health. Programs were included for review on the basis that they were widely available for purchase in Australia and were specifically designed for primary school students, for their parents, or for teaching staff or school administrators involved in the primary school community. Categorisation of component 2 programs in the Guide was informed by the core competencies framework for social and emotional learning. Programs relating to components 2, 3 and 4 were also rated for evidence of effectiveness, which was determined by grading the quality of research evidence currently available for each particular program. A sample categorisation table for component 2 is included in Appendix 1. The KidsMatter Primary Programs Guide is online at www.kidsmatter.edu.au/programs-guide/

State and Territory-based KidsMatter Primary Project Officers

State and Territory KidsMatter Primary Project Officers have knowledge and experience in children's mental health promotion, prevention and early intervention in educational settings as well as an extensive understanding of KidsMatter Primary. These Officers work closely with and provide ongoing consultation to each school's ISP to enable them to, in turn, provide implementation support for schools.

Project Officers also support the establishment and operations of KidsMatter Primary Regional Leadership Groups who work to ensure local ownership and responsiveness to local issues and needs, as well as enhance school access to information, services and supports provided by relevant agencies in the local community.

Supporting resources for parents and teachers

In addition to the direct school support provided by the Implementation Support Person, a number of additional resources for parents and teachers are available. These include:

1. KidsMatter Primary component posters

A set of four colourful KidsMatter Primary posters for display in schools highlighting the four components of KidsMatter Primary and key messages.

2. KidsMatter Primary parent and carer information sheets

Information sheets relating to the four KidsMatter Primary components will be provided to schools for attaching to parent newsletters on a weekly or fortnightly basis. The idea is to support parents and carers in their parenting role, to help them see that the school is actively promoting parenting and caring support and also to see the school as a place where they can access further information should they require it. These resources are free and available online at: www.kidsmatter.edu.au/resources/information-resources/

3. Mental health resource packs on relevant topics related to children

A series of more detailed resource packs for use by teachers, parents and carers are available that cover key topics to do with prevention, understanding and management of children's mental health issues. These packs provide resources for teachers, parents and carers who are seeking more specific information on how to manage particular emotional or behavioural issues and/or to understand more about specific mental health problems that may be affecting the children in their care.

Each of these resource packs include:

- an overview, in accessible language, that reviews key issues and research findings in relation to the specific mental health topic
- management tips for teachers, parents and carers who may be dealing with a child affected by the particular mental health difficulty under discussion
- suggestions for follow up – e.g. links to organisations or websites that offer assistance with the difficulties discussed. These resources are free and available online at: www.kidsmatter.edu.au/resources/information-resources/

4. eNewsletter and KidsMatter website

A KidsMatter Primary eNewsletter is produced four times per year. It contains updates on the process of KidsMatter Primary implementation nationally as well as further information on developments in mental health and education that relate to each of the four KidsMatter Primary components.

The KidsMatter Primary website provides a range of information about the KidsMatter Primary initiative and links to further resources that support children's mental health.

Pilot phase and evaluation of KidsMatter Primary

KidsMatter Primary was trialled in over 100 schools across Australia during 2006 – 2008. During this trial phase, KidsMatter Primary was also extensively and rigorously evaluated in order to learn what worked, what did not, and how KidsMatter Primary can be improved for schools in the future.

The schools participating in the trial were selected from applications submitted in July 2006. The selected schools represented a cross-section of Government, Catholic and Independent schools from across the states and territories. Representatives from fifty-one of the selected schools were then involved in a two-day briefing in September 2006 and began their implementation of KidsMatter Primary from that point on. The remaining fifty pilot schools attended an initial briefing in September 2007 and then commenced their implementation. A full list of private schools follows below.

A team based at Flinders University was engaged to undertake the evaluation of the KidsMatter Primary trial. The evaluation will provide information about the implementation process and whether the initiative leads to improved mental health for students. The findings will inform the subsequent national roll-out of KidsMatter Primary initiatives and will be available on the KidsMatter website: www.kidsmatter.edu.au

KidsMatter Primary pilot schools

101 Government, Catholic and Independent schools across Australia participated in the KidsMatter Primary pilot. The pilot was divided into 2 rounds with 51 schools beginning implementing KidsMatter Primary in September 2006 and the remaining 50 schools starting in September of 2007.

Australian Capital Territory (ACT)

Round 1 Schools

Turner Primary School – Turner
Trinity Christian School – Wanniasa
Canberra Girls' Grammar Junior School – Deakin

Round 2 Schools

Aranda Primary School – Aranda
Gowrie Primary School – Gowrie
St Francis of Assisi Primary School – Calwell

New South Wales (NSW)

Round 1 Schools

Brooke Avenue Public School – Killarney Vale
Curran Public School – Macquarie Fields
Dubbo Public School – Dubbo
Elands Public School – Elands
King Park Public School – Wakeley
Northmead Public School – Northmead
St Bernadette's Primary School – Lalor Park
St John Fisher Catholic School – Tumby Umbi
St Columba's Primary School – Berrigan

St Joseph's Primary School, Schofields – Schofields

Round 2 Schools

Bexley Public School – Bexley

Carramar Public School – Carramar

Faulconbridge Public School – Springwood

Harrington Street Public School – Cabramatta West

St Bede's Primary School – Braidwood

St Oliver's Primary School – Harris Park

St Mary's Catholic Primary School – Noraville

Tahmoor Public School – Tahmoor

St Patrick's Primary School – Macksville

Northern Territory (NT)

Round 1 Schools

Gray Primary School – Palmerston

Living Waters Lutheran School Inc. – Alice Springs

Nhulunbuy Primary School – Nhulunbuy

Round 2 Schools

Howard Springs Primary School – Howard Springs

Jingili Primary School – Darwin

Sacred Heart Primary School – Palmerston

Indigenous Focus

Milikapiti School – Melville Island

Queensland (QLD)

Round 1 Schools

Burdekin School Special School – Ayr

Home Hill State School – Home Hill

Ithaca Creek State School – Bardon

Labrador State School – Labrador

Pomona State School – Pomona

Sandy Strait State School – Urangan

St Joseph's Stanthorpe – Stanthorpe

Cairns West State School – Manunda

Wondai State School – Wondai

Round 2 Schools

Caloundra Primary School – Caloundra

Goondiwindi State Primary School – Goondiwindi

Mater Hospital Special School – Woolloongabba

Redlynch State School – Redlynch

Tallebudgera State School – Tallebudgera

The Willows State School – Kirwan

Unity College – Caloundra West

Upper Mt Gravatt State School – Brisbane

South Australia (SA)

Round 1 Schools

Woodville Primary School – Woodville South

Hamley Bridge Primary School – Hamley Bridge

Hewett Primary School – Hewett

Leigh Creek Area School + Marree Aboriginal School – Leigh Creek

East Torrens Primary School – Hectorville

St Aloysius College – Adelaide

Round 2 Schools

Annesley College – Wayville

Cobdogla Primary School – Cobdogla

Elizabeth Park Schools – Elizabeth Park

Munno Para Primary School – Munno Para

Open Access College – Marden

Roxby Downs Area School – Roxby Downs

Woodcroft Primary School – Woodcroft

Tasmania (TAS)

Round 1 Schools

Distance Education Tasmania – North Hobart

Richmond Primary School – Richmond

Waverley Primary School – Launceston

Round 2 Schools

Kempton Primary School – Kempton

Lauderdale Primary School – Lauderdale

Rocherlea Primary School – Mowbray

Victoria (VIC)

Round 1 Schools

Christ the King Primary School – Braybrook

Hastings Primary School – Hastings

Monmia Primary School – Keilor Downs

Sacred Heart Primary School – Fitzroy

Saint Joseph's – Traralgon

St Bernadette's Primary School – North Sunshine

St. Christopher's School – Airport West

St. Vincent de Paul Primary School – Morwell

Tootgarook Primary School – Rye

Upper Ferntree Gully Primary School – Upper Ferntree Gully

Round 2 Schools

St Mary's Primary School – Echuca

Benalla Primary School – Benalla

Corio Primary School – Corio

Lumen Christi – Churchill

North Brunswick Primary School – West Brunswick

Southvale Primary School – Noble Park

St. Andrew's Catholic Primary School – Werribee

St. Anne's Primary School – Seaford

St. Therese's Primary School – Cranbourne

St Louis De Montfort Primary – Aspendale

Western Australia (WA)

Round 1 Schools

Bull Creek Primary School – Bull Creek

Holy Name School – Carlisle

Bannister Creek Primary School – Ferndale

Liwara Catholic Primary School – Greenwood

Settlers Primary School – Baldviss

St Simon Peter Catholic Primary School – Ocean Reef

Nulsen Primary School – Esperance

Round 2 Schools

Geraldton Grammar School – Geraldton

Hilton Primary School – Hilton

Lance Holt School – Fremantle

Leeming Primary School – Leeming

Rockingham Beach Primary School – Rockingham

Star of the Sea Catholic Primary School – Rockingham

Cooinda Primary School – Bunbury

Glossary

Anxiety	Anxiety is defined as a feeling of worry or unease. Anxiety is made up of physiological symptoms (e.g., sweaty palms, 'butterflies' in stomach), behavioural symptoms (such as avoiding situations that trigger anxiety) and cognitive components (e.g. thinking "I'm going to fail and everyone will laugh at me").
Attachment	An emotional bond between children and those who care for them that provides children with a sense of security and safety. Secure attachment in childhood is associated with better social and emotional skills and pro-social behaviour. It is an important protective factor in children's mental health.
Depression	The term depression may describe either a general emotional state (e.g., feeling sad or depressed) or a 'mental disorder'. It is part of normal human experience to feel sad or depressed. However, when depressive symptoms are severe, ongoing (at least two weeks), and interfere with a person's everyday functioning a diagnosis of "depressive disorder" may be warranted.
Early intervention	In mental health, this term refers to picking up signs of a mental health problem and doing something about it. The goal is to prevent the problems worsening, for example, by providing support to the student or linking them to helpful programs.
Implementation Support Personnel	Implementation Support Personnel provide implementation support to participating KidsMatter Primary schools and if appropriate, professional learning in one or more of the four KidsMatter Primary components.
Mental health	Mental health for children means the capacity to enjoy and benefit from satisfying family life and relationships and educational opportunities, and to contribute to society in a number of age-appropriate ways. It also includes freedom from problems with emotions, behaviours or social relationships that are sufficiently marked or prolonged to lead to suffering or risk to optimal development in the child, or to distress or disturbance in the family (Raphael, 2000).
Mental health difficulties and mental disorders	The term "mental health difficulties" describes a broad range of emotional and behavioural difficulties that cause concern or distress and frequently affect children's learning at school as well as their behaviour at home, at school and with peers. The term "mental health problems" is used interchangeably with mental health difficulties. "Mental disorders" are diagnosed by mental health professionals according to specific sets of criteria. For each kind of disorder the symptoms are more frequent and more severe than normally expected in children of a similar age and interfere with the child's everyday activities.
Prevention	Actions taken early to try to stop mental health difficulties from developing. Prevention actions can be taken for a whole population (e.g., everyone at school). Selective programs are provided for those groups at increased risk of developing mental health difficulties.
Protective factors	Protective factors may be thought of as strengths that enable children to maintain positive mental health and wellbeing even though risk factors for mental health problems are present. Protective factors may include aspects of the child's individual abilities, their family circumstances and relationships or their school's practices and environment.
Resilience	Resilience refers to a person's capacity to adapt to adverse situations in ways that enable them to cope positively and reduce or minimise negative impacts on mental health and wellbeing.
Risk factors	Risk factors increase the likelihood that mental health problems will develop. Risk factors are commonly categorised in relation to individual factors, family factors, school factors, specific life events or circumstances, and social factors.

Stigma	A negative association or preconception, which causes discrimination against a person or group. Negative stereotypes and misconceptions about mental health issues may lead to discrimination against those with mental health difficulties, and make it harder for them to seek help and support.
Stress	Stress occurs when the demands of any given situation are greater than the resources available for dealing with it. It often leads to physiological and psychological symptoms of anxiety. Moderate psychological stress can be a trigger for developing effective coping skills which help to reduce anxiety symptoms. Severe or prolonged stress may increase the risk of a mental health problem or disorder.
Temperament	Used to refer to the stable biologically-based characteristics that influence how children react and their likes and dislikes.
Trauma	Severe emotional shock caused by being exposed to extremely distressing or life-threatening experiences. Traumatic experiences often have long-lasting psychological effects.
Wellbeing	Wellbeing refers to the condition or state of being well, contented and satisfied with life. Wellbeing has several components, including physical, mental, social and spiritual.
Whole-school approach	A comprehensive and coordinated approach to developing school policies and implementing school practices to effectively meet the needs of students, staff, parents and the wider community. A whole school approach considers all the different aspects of a school, such as the curriculum, teaching style, classroom climate, school culture, student participation, physical environment, partnerships with the community, welfare services and the wellbeing of staff.

References

- Askill-Williams, H., Russell, A., Dix, K.L., Slee, P.T., Spears, B.A., Lawson, M.J., Owens, L.D., Gregory, K. (2008). Early challenges in evaluating the KidsMatter national mental health promotion initiative in Australian primary schools. *International Journal of Mental Health Promotion*, 10(2), 35–44.
- Australian Health Ministers (2003). *National Mental Health Plan 2003–2008*. Canberra: Australian Government.
- Bernard, M. (2004). The relationship of young children's social-emotional development to their achievement and social-emotional wellbeing, Supporting Student Wellbeing: *What does the research tell us about the social and emotional development of young people: Conference proceedings*. Camberwell VIC: Australian Council for Educational Research.
- Collaborative for Academic, Social, and Emotional Learning. (2003). *Safe and sound: An educational leaders' guide to evidence-based social and emotional learning (SEL) Programs*. Retrieved June 29, 2006, from www.casel.org.
- Commonwealth Department of Health and Aged Care (2000). *Promotion, prevention and early intervention for mental health – A monograph*. Canberra, Australian Capital Territory: Author.
- Durlak, J. A. (1998). Primary prevention mental health programs for children and adolescents are effective. *Journal of Mental Health*, 7, 463–469.
- Elias, M. J. (2003). *Academic and Social Emotional Learning*. Brussels, Belgium: International Academy of Education.
- Flaspohler, P., Paternite, C. E., Evans, S., Harpine, E. C., & Weist, M. S. (2005). From policy to practice: Using community science to promote school-based mental health. Symposium presented at the annual meeting of the American Psychological Association, August 2005. Washington, D. C.
- Fuller, A. (2001). A blueprint for building social competencies in children and adolescents. *Australian Journal of Middle Schooling*, 1, 40–48.
- Graetz, B., Littlefield, L., Trinder, M., Dobia, B., Souter, M., Champion, C., Boucher, S., Killick-Moran, C., Cummins, R. (2008). KidsMatter: A population health model to support student mental health and wellbeing in primary schools. *International Journal of Mental Health Promotion*, 10(4), 13–20.
- McGrath, H. (2005). Directions in teaching social skills to students with specific emotional and behavioural difficulties, in P. Glough, P. Garner, J. T. Pardeck, J & F Yuen, *Handbook of Emotional and Behavioural Difficulties*. London: Sage Books.
- Paternite, C. E. & Johnston, T. C. (2005) Rationale and strategies for central involvement of educators in effective school-based mental health programs, *Journal of Youth and Adolescence*, 34, 41–49.
- Raphael, B. (2000). *Promoting the mental health and wellbeing of children and young people. Discussion paper: Key principles and directions*. Canberra, Australian Capital Territory: Department of Health and Aged Care, National Mental Health Working Group.
- Sanders, M. R., Tully, L. A., Baade, P. D., Lynch, M. E., Heywood, A. H., & Pollard, G. E. (1999). A survey of parenting practices in Queensland: Implications for mental health promotion. *Health Promotion Journal of Australia*, 9, 105–114.
- Sawyer, M.G., Arney, F.M., Baghurst, P.A., Clark, J.J., Graetz, B.W., Kosky, R.J., Nurcombe, B., Patton, G.C., Prior, M.R., Raphael, B., Rey, J., Whaites, L.C. & Zubrick, S.R., (2000). *The Mental Health of Young People in Australia: The Child and Adolescent Component of the National Survey of Mental Health and Wellbeing*. Canberra: AusInfo.
- Sawyer, M.G., Arney, F.M., Baghurst, P.A., Clark, J.J., Graetz, B.W., Kosky, R.J., Nurcombe, B., Patton, G.C., Prior, M.R., Raphael, B., Rey, J.M., Whaites, L.C. & Zubrick, S. R. (2001). The mental health of young people in Australia: Key findings from the child and adolescent component of the national survey of mental health and well-being. *Australian and New Zealand Journal of Psychiatry*, 35, 806–814.
- Slee, P., Lawson, M. J., Murray-Harvey, R. & Askill-Williams, H. (2005). *An Investigation of the Implementation of a MindMatters Teaching Module in Secondary School Classrooms: Interim Report November 2005*. Adelaide: School of Education, Flinders University.
- Spence, S.H. (1996). A Case for Prevention. In Cotton, P. & Jackson, H. (Eds) *Early Intervention and Prevention in Mental Health*. Melbourne: Australian Psychological Society.
- Spence, S., Burns, J., Boucher, S., Glover, S., Graetz, B., & Kay, D. (2005). The *beyondblue* schools research initiative: Conceptual framework and intervention. *Australasian Psychiatry*, 13, 159–164.
- Stewart, D., Sun, J., Patterson, C., Lemerle, K., & Hardie, M. (2004). Promoting and building resilience in primary school communities: Evidence from a comprehensive 'Health Promoting School' approach. *International Journal of Mental Health Promotion*, 6, 26–33.
- Stormshak, E. A., Dishion, T. J., Light, J., & Yasui, M. (2005). Implementing family-centered interventions within the public middle school: Linking service delivery to change in student problem behavior. *Journal of Abnormal Child Psychology*, 33, 723–734.
- Tolan, P. H. & Dodge, K. A. (2005). Children's mental health as a primary care and concern: A system for comprehensive support and service. *American Psychologist*, 60, 601–614.
- World Health Organization (1994). *Mental Health Programmes in Schools*. Geneva: Author.
- World Health Organization (2006). *Creating an environment for emotional and social well-being*. Geneva, Switzerland: Author.

KidsMatter Primary contacts:

The Australian Psychological Society

Sarah Cavanagh

Manager: Child and Youth Projects
Telephone: 03 8662 3361
Email: s.cavanagh@psychology.org.au

beyondblue: the national depression initiative

Dr Brian Graetz

Program Director: Education and Early Childhood
Telephone: 03 9810 6129
Email: brian.graetz@beyondblue.org.au

Principals Australia

Kaye Johnson

National KidsMatter Coordinator – PA
Telephone: (08) 8245 9809
Email: kaye.johnson@pa.edu.au

For further details please visit: www.kidsmatter.edu.au/kidsmatter-overview/partners/

A note on the KidsMatter Primary development partners

The Department of Health and Ageing

The vision of the Department of Health and Ageing is *Better health and active ageing for all Australians*. The department is responsible for achieving the Government's priorities for population health, aged care and population ageing as well as medical services, primary care, rural health, hearing services and Indigenous health. The department administers programs to meet the Government's objectives in health system capacity and quality, mental health, health workforce, acute care, biosecurity and emergency response, as well as sport performance and participation. The department supports the Australian community's access to affordable private health services and is responsible for policy on Medicare and the Pharmaceutical Benefits Scheme.

beyondblue: the national depression initiative

beyondblue is a national, independent, not-for-profit organisation working to address issues associated with depression, anxiety and related substance-use disorders in Australia. *beyondblue* is a bipartisan initiative of the Australian, State and Territory Governments with the key goals of raising community awareness about depression and reducing stigma associated with the illness. *beyondblue* works in partnership with health services, schools, workplaces, universities, media and community organisations, as well as people living with depression, to bring together their expertise. One of the main priorities of *beyondblue* is to fund research initiatives such as KidsMatter which focus on the prevention and early intervention of mental health problems in Australian communities

Australian Psychological Society (APS)

The Australian Psychological Society is the largest professional association for psychologists in Australia, representing more than 17,500 members. The APS is committed to advancing psychology as a discipline and profession. It spreads the message that psychologists make a difference to people's lives, through improving their health and wellbeing and improving scientific knowledge. The APS works on understanding important social issues facing Australian society and contributes to community wellbeing by promoting access to better health care and evidence-based treatments. To achieve these objectives, the APS is also involved in several projects that promote mental health and the benefits of early intervention for identified mental health difficulties across the lifespan, including KidsMatter.

Principals Australia (PA)

Formerly the Australian Principals Associations Professional Development Council, PA is the national professional development body owned by the four Australian peak principals' association – the Australian Secondary Principals Association, Australia Primary Principals Association, Association of Principals of Catholic Secondary Schools of Australia and Association of Heads of Independent Schools of Australia. It is governed by a board representing these four associations and is managed by a secretariat based in Adelaide.

PA supports principals, their associations and their schools, to build effective and sustainable leadership in Australia, so that the learning and wellbeing of students and staff are optimised. It provides access to professional development activities and resources on leadership development, leading learning and leading the promotion of social and emotional wellbeing.

Australian Rotary Health

Australian Rotary Health (formerly the Australian Rotary Health Research Fund) was initiated in 1981 by the Rotary Club of Mornington in Victoria to establish a Trust Fund with the aim of raising funds for medical research. Early funding investigated the causes of Cot Death and provided research funding in Environmental Health Problems of the Aged, Adolescent Health and Family Health. In 2000, Australian Rotary Health launched its current program in support of research in mental illness and pledged to invest a minimum of \$5 million. The Fund has now expended more than \$7 million in research in mental illness as well as promoting awareness of mental health problems in the Australian community.

Appendix I

Sample categorisation key and categorisation table for SEL programs from the KidsMatter Primary Programs Guide

Categorisation Key (Note: the criteria used in these tables are based on those of CASEL, 2003.)

Sound SEL instructional practice

<input type="radio"/>	No or minimal coverage.
<input type="radio"/>	Consistent provision of information only.
<input type="radio"/>	Consistent opportunities for guided in-lesson skill practise.
<input type="radio"/>	Consistent opportunities for skill application beyond the lesson.

Other factors

Evidence of effectiveness

* to count as a separate evaluation study, the report must be based on a different sample or data set than described in another study.

<input type="radio"/>	No evaluations were submitted that met the inclusion criteria, OR A preponderance of evidence does not show positive program impacts on behavioural measures.
<input type="radio"/>	Single study documents positive behavioural outcomes at post-test.
<input type="radio"/>	Multiple studies* document positive behavioural outcomes at post-test, OR A single study finds positive behavioural impacts at a follow-up at least one year after the intervention ended.
<input type="radio"/>	Multiple studies* document positive behavioural outcomes at post-test, with at least one study indicating positive behavioural impact at follow-up at least one year after the intervention ended.

Identified theoretical framework

The authors and/or developers of the program have identified a recognised theoretical framework that the interventions/activities used in the program are based on.

<input checked="" type="checkbox"/>	Yes
-------------------------------------	-----

Structured sessions

<input type="radio"/>	Program comprises a collection of activities that are not structured formally into sessions.
<input type="radio"/>	Program is loosely arranged into sessions with minimal instructions for implementation.
<input type="radio"/>	Program comprises a series of formally structured sessions with basic instructions for implementation.
<input type="radio"/>	Program comprises a series of formally structured sessions with comprehensive instructions (i.e. detailed facilitator notes, examples, responses etc.) to ensure consistent implementation.

Student assessment measures

<input type="radio"/>	No formal tools are provided for individual student assessment.
<input type="radio"/>	Formal tools provided for infrequent individual student assessment.
<input type="radio"/>	Formal tools provided for individual ongoing test-based student assessment.
<input type="radio"/>	Formal tools provided for individual ongoing performance-based student assessment.

Designed for, or demonstrated applicability to, special student groups

I	Indigenous
C	Culturally and Linguistically Diverse (CALD)
S	Special Needs (e.g. Learning Disabilities, Intellectual Disability, Physical Disabilities etc.).
R	Rural settings
LS	Low socioeconomic status and disadvantaged

Parent component

Formal parent component

<input checked="" type="checkbox"/>	Consistent activities and materials for skill practice to take place at home are provided as part of the program, OR Structured parent sessions are provided as part of the program.
-------------------------------------	---

Staff Professional Learning

Staff Professional Learning availability

<input checked="" type="checkbox"/>	Yes
R	Program training and/or implementation are restricted to specific staff members, such as a school psychologist, or those who have completed preliminary training levels.
E	Professional learning for school staff is not required, as program can only be implemented by an external agency (i.e. Community Health Centre, organisation etc.).

Compulsory staff Professional Learning

Whole of staff professional learning is undertaken prior to the implementation of the program.

<input checked="" type="checkbox"/>	Yes
-------------------------------------	-----

Component 2:

Social and emotional learning for students

General programs

Sample Only

Program title & author(s)	Year levels & ranges targeted	Sound SEL instructional practice					Other factors					Parent component	Staff Professional Learning		
		1. Self-awareness	2. Social awareness	3. Self-management	4. Responsible decision making	5. Relationship skills	Evidence of effectiveness	Identified theoretical framework	Structured sessions	Student assessment measures	Designed for, or demonstrated applicability to, special student groups		Formal parent component	Staff Professional Learning availability	Compulsory staff Professional Learning
Program A Author	P-6	○	○	○	○	○	✓	●	○	○	○	○	✓	✓	✓
Program B Author	K-2	●	○	●	●	●	✓	●	●	●	●	●	✓	✓	✓
Program C Author	P-4	○	○	○	●	●	✓	○	○	○	○	○	✓	✓	✓
Program D Author	1-2, 3-4, 5-6	○	○	○	○	○	✓	○	○	○	○	○	✓	✓	✓
Program E Author	P-6	●	●	●	●	●	✓	○	○	○	○	○	✓	✓	✓
Program F Author	1-2, 2-3, 3-4, 4-5, 5-6, 6-8	○	○	○	○	○	✓	○	○	○	○	○	✓	✓	✓



AUSTRALIAN PRIMARY SCHOOLS
MENTAL HEALTH INITIATIVE